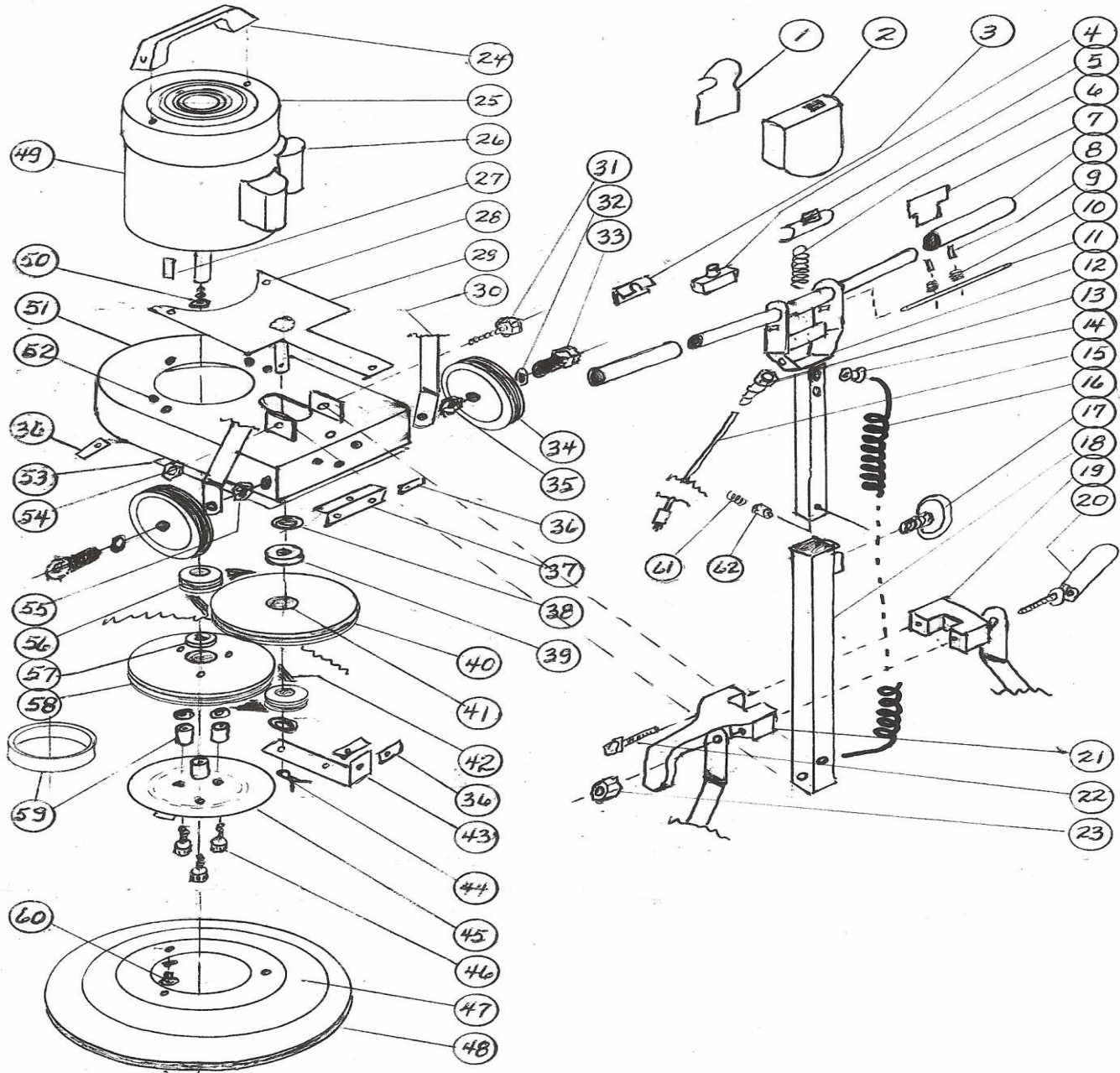


Floor Machine Diagram



ITEM NUMBER	PART NUMBER	PART DESCRIPTION	QUANTITY REQUIRED
1	L0002	SW BX CVR LABEL-EUREKA-.5HP	1
2	W0003-3P-1	SWTCH BX CVR-13 IN-EUREKA RED	1
2A	H0002-3	SCREW 10-24 X .50	2
2B	H0020	WASHER#10 EXT.TOOTH LCK	2
3	H0013	SWITCH INSULATION	1
4	E0007	MAIN ON/OFF SWITCH	1
5	C0003	SAFETY SWITCH	1
6	H0014	SPRING 2LNG X .025 OD X.026	1
7	L0005-1	WARNING LABEL	1
8	C0007-2	HANDLE GRIP - GRAY	2
9	H0012	ROLL PIN 1/8 C 1-3/4	2
10	H0023	SPRING 11/16LNG X.344 OD X.032	2
11	S0008P-1	PAINTED - TRIGGER - GRAY	1
12	W0002U-1P	HANDLE - UPPER - TELESCOPING 13	1
13	H0021-3	STRAIN RELIEF HEYCO	1
13A	H0022	NUT (APPLETON BL50 /NEER L100)	1
14	H0028-3	GROMMET BG-140	3
15	E0031-2	CRD-BLK-16-3 SJT UL/CSA 25'	1
16	E0012-2	CORD BLACK-16-3 1-5' SJEO COIL	1
17	H0101	KNOB (ROSETTE) FOR 1/2 BOLT	1
18	W0002L-1P	HANDLE-LOWER-TELESCOPING-	1
19	C0006P-1	PNT-CRDHK CAP/HDL LK CLMP GRAY	1
20	HP0003-1	CAMLOCK ASSEMBLY	1
20A	H0001P	PLATED SLOTTED WASHER	1
20B	H0017	3/8-16X4-3/8 SPADE BOLT ZINC	1
20C	H0018	RIVET 5/16 X 1-1/4 SOLID-ZINC	1
20D	H0019	PUSH NUT 5/16 - BRIGHT NICKEL	1
20E	M0001P2	PAINTED-HANDLE LOCK CAM GRAY	1
21	C0008P-1	PAINTED - CORD HOOK - GRAY	1
22	H0044	3/8-16 X 2-1/2H.C.S. GR8 BLK	1
23	H0015	NUT-3/8 X 16 HEX NYLCK - ZINC	1
23A	H0016	3/8 FLAT WASHER - BLK OXIDE	2
24	C0038	LIFT HANDLE W/BRASS INSERT	1

ITEM NUMBER	PART NUMBER	PART DESCRIPTION	QUANTITY REQUIRED
25	E0002	MOTOR 1/2 HP 115/230V 60 C	1
26	E0008-4	START CAPACITOR 340-408 MICRO FARADS	1
27	H0053-1	KEY -- MOTOR/PULLEY	1
28	H0056-6	CARRIAGE BOLT, 1/4-20 X 3/4	3
28A	H0079-1	1/4 - 20 NYLOC NUT	3
28B	H0058	1/4 FLAT WASHER	2
29	W0001-2P-1	PLATE -- ADJUSTOR RED	1
30	S0005P-1	PAINT-CONNECTING LEG - GRAY	2
31	H0043-1	3/8-16X2-1/4 HX CP SCRW, 2 ZNC	1
32	H0007	SPRING WASHER .515 ID ZINC	2
33	H0091-2	1/2X13X3 HX CAP SCRW 5-ZINC	2
34	C0004	WHEELS 1.25WX5DIA W/1/2BORE	2
35	H0008	WASHER - ZINC PLATED STEEL	6
36	H0079-3	AVECO CLIP #8359	7
37	S0041P	BELT ADJ. BRACKET-UPPER, ZINC	1
37A	H0056-8	1/4-20X1-1/4 HX TAP BLT 2-ZINC	3
37B	H0054	LOCK WASHER .250 SPLIT ZINC	3
38	H0008	WASHER - ZINC PLATED STEEL	8
39	M0019-2	BEARING .500 ID	2
40	M0015-4	STEP PULLEY	1
41	M0029	SPACER -- BEARING	1
42	C0014-3	BELT	2
43	S0040P	BELT ADJ. BRACKET-LOWER, ZINC	1
43A	H0056-8	1/4-20X1-1/4 HX TAP BLT 2-ZINC	1
43B	H0054	LOCK WASHER .250 SPLIT ZINC	1
44	H0006	COTTER PIN - ZINC 3/32 X 1	1
45	C0036M	MACH-CLUTCH DRIVE CASTING EYAS	1
46	H0056-5	1/4-20X2-3/4 SC CP SCRW BLK OX	3
47	S0020-1P-10	13 BRUSH.COVER-HAMMER GRAY	1
48	C0015-1	13 INCH BUMPER - RED	1
49	L0001	MOTOR LABEL	1
50	H0056-8	1/4-20X1-1/4 HX TAP BLT 2-ZINC	1
50A	H0054	LOCK WASHER .250 SPLIT ZINC	1

ITEM NUMBER	PART NUMBER	PART DESCRIPTION	QUANTITY REQUIRED
51	W0001-2P-1	FRM ASSY-2PCS FR BLT DRV 13 IN	1
52	H0041	3/8-16 X 3/4H.C.S. GR5 ZINC	3
52A	H0004	3/8 MED. SPLIT L/W ZINC	3
53	C0037P	SPLASH GUARD MAT.-WRINKLE	1
53A	H0056-8	1/4-20X1-1/4 HX TAP BLT 2-ZINC	1
54	H0015-1	NUT-3/8 X 16 NYLON L/N ZINC	1
55	H0090-1	NUT - 1/2-13 INCH NYLON- ZINC	2
56	M0015-3	DRIVE PULLEY	1
57	M0019-3	BEARING .625 ID	2
58	M0014-1	PULLEY - IDLER DRIVE	1
59	M0004	SPACER -- 1/4 ID BLACK PLASTIC	3
59 (ALT)	C0039	ALTERNATE CONSTRUCTION -- SPACER RING	1
59A	H0058	1/4 FLAT WASHER	3
60	H0056-9	SCREW 1/4 - 20 X 3/4	3
60A	H0054	LOCK WASHER .250 SPLIT ZINC	3
61	H0023	SPRING 11/16LNG X.344 OD X.032	1
62	M0003-2P	SLEEVE - LOCK PIN	1