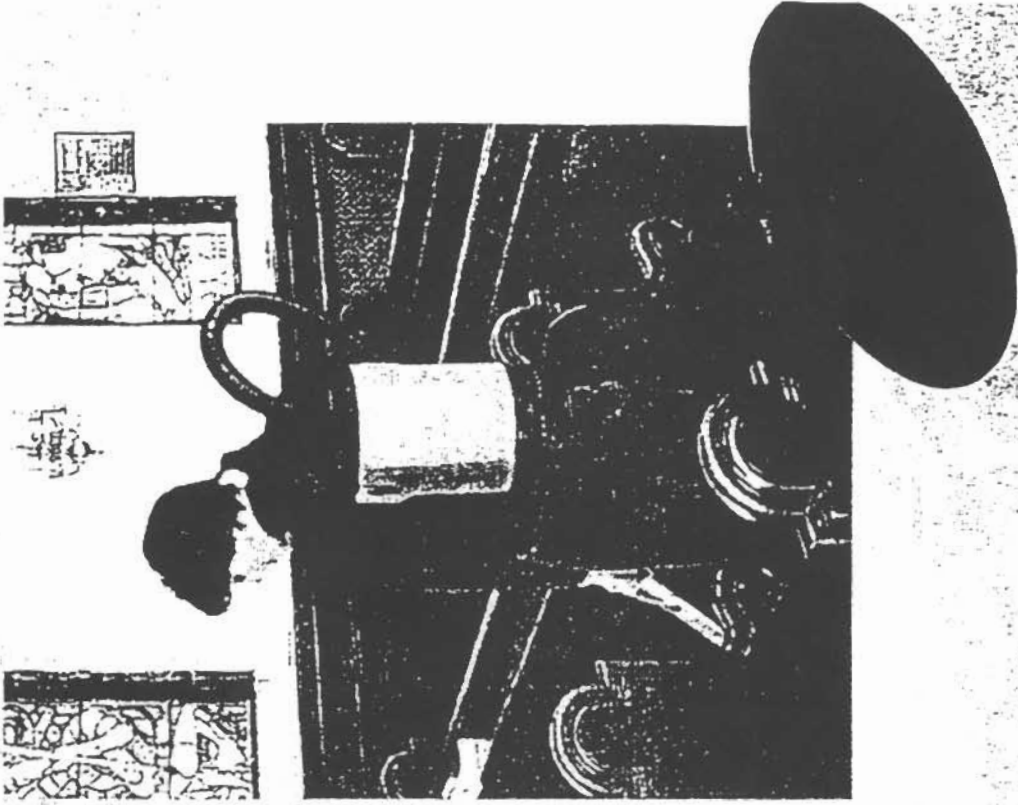
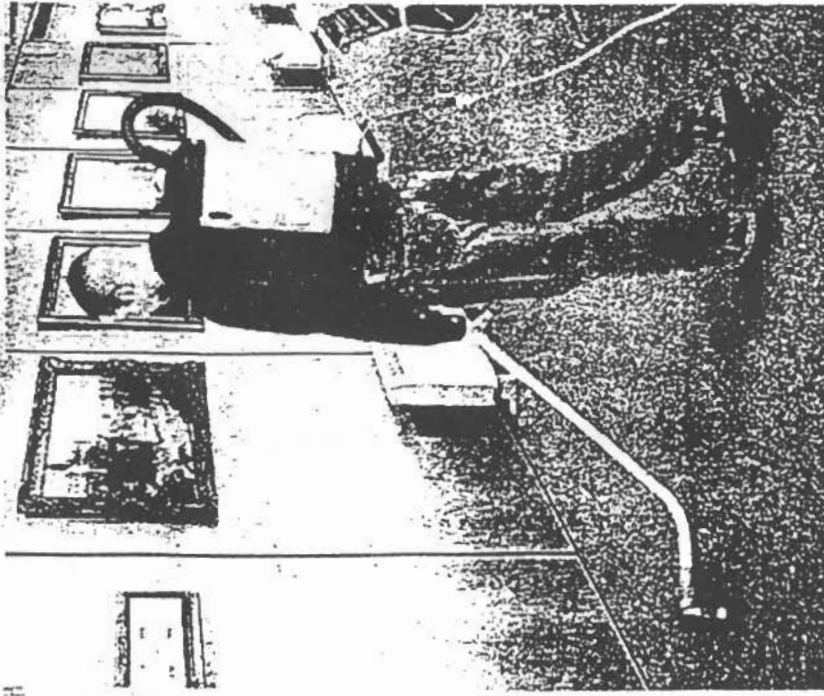


Safety • Maintenance
Operation • Parts • Warranty

OWNER'S MANUAL



READ ALL INSTRUCTIONS BEFORE USING.

SAVE THESE INSTRUCTIONS.

**FOLLOWING THE CLEANING INSTRUCTIONS WILL
PROLONG THE LIFE OF YOUR BACKPACK VACUUM.**

Serial No. _____

Date of Purchase _____

Contact Person _____

TABLE OF CONTENTS

Introduction	2
Inspection, Warnings, Motor, Electrical, Grounding Instructions	
Safety Instructions	3
Additional Warnings for Use of Power Nozzles	
Operation	4-6
Preparing the Vacuum for Operation	
Preparing for Use with Power Nozzles, Preparing for Use as a Canister, Electrical Cord Care, Proper Storage Proper Vacuuming Motion for Large Areas with Direct Suction Tools	
Ergonomics, Caring for Your Vacuum	
Preventive Maintenance	6
Troubleshooting, Maintenance of Power Nozzles	
Filter Maintenance	7
Assembly	8
List	9
Assembly	10
List	11
Warranty Information	12

INTRODUCTION

INSPECTION

Carefully unpack and inspect your new vacuum for shipping damage. Each unit is tested and thoroughly inspected before shipping. For instructions regarding any shipping damage, contact Crusader immediately. All returns must have a Return Authorization Number (RAN).

WARNINGS

- ◆ DO NOT vacuum with a frayed, worn, or damaged cord.
- ◆ DO NOT vacuum liquids or expose the backpack vacuum to rain or water.
- ◆ DO NOT vacuum hazardous or toxic materials.
- ◆ DO NOT use to pick up flammable or hazardous materials.

MOTOR

AMETEK LAMB electric thru-flow vacuum motors must never be used in applications in which wet or moist conditions are involved, where dry chemicals or other volatile materials are present, or where airflow may be restricted or blocked. Such motors are designed to permit the vacuumed air to pass over the electrical wiring to cool it. Therefore, any liquid (including water), dry chemical, or other foreign substance which would come in contact with electrical conductors could cause combustion (depending on volatility) or electrical shock. Failure to observe these precautions could result in property damage and severe personal injury, including death in extreme cases.

ELECTRICAL

Excluding the 220 V motors, vacuum motors operate on a standard 120 volt, 60 Hz, AC circuit. Severe changes in voltage, high or low, can cause damage to the motor and cause premature motor failure. Model numbers and specifications can be obtained by calling Crusader.

GROUNDING INSTRUCTIONS—COMMERCIAL-RATED UNITS

The Crusader 3030A Walkabout MUST BE GROUNDED. If the vacuum should malfunction or stop working, grounding provides a path of least resistance for electrical current, thereby reducing the risk of electrical shock. This unit is equipped with a cord that has an equipment-grounding conductor and grounding plug. The plug must be inserted in an appropriate outlet that is properly installed and grounded in accordance with all local codes and ordinances. Cutting off the ground wire or using a cord that is not equipped with a ground plug will void the warranty on the unit, and Crusader will accept NO liability associated with the unit.

Improper connection of the equipment-grounding connector conductor can result in a risk of electrical shock. Check with a qualified electrician or service person if you doubt that the outlet is properly grounded. Do not modify the plug provided with the vacuum. If it will not fit the outlet, have a proper outlet installed by a qualified electrician.

SAFETY INSTRUCTIONS

WARNING

To reduce the risk of fire, electric shock or injury, read the following:

1. Do not leave the unit plugged in when it is not in use. Unplug it from the outlet when the unit is not in use and before servicing.
2. Do not use outdoors or on wet surfaces.
3. Do not try to recover any liquid with this vacuum. This vacuum is for DRY RECOVERY only.
4. Use only as described in this manual. Use only manufacturer's recommended attachments and replacement parts.
5. To prevent electrical damage, use the recommended 50 foot/16 gauge extension cord provided. If you need to use a 100 foot cord, it must be 14 gauge or better. DO NOT use cords longer than 100 feet.
6. DO NOT USE A DAMAGED CORD OR PLUG. If the unit is not working as it should, or if it has been dropped, damaged, left outdoors, or exposed to water, return it to an authorized servicing dealer for inspection.
7. Do not pull or carry the vacuum by the cord or use the cord as a handle. Do not close a door on the cord or pull the cord around sharp edges or corners. Do not run over the cord. Keep the cord away from heated surfaces.
8. DO NOT pull on the cord to unplug. Grasp the plug at the outlet and pull.
9. Do not handle the plug or vacuum with wet hands.
10. Do not put any objects into openings. Keep hair, loose clothing, fingers, and all parts of the body away from openings and moving parts. Long hair should not hang over or near the unit.
11. Do not vacuum flammable or combustible materials or anything that is burning or smoking, such as cigarettes, matches, or hot ashes.
12. Empty the filter bag after every use and before storage. Some types of dust and debris may combust.
13. Turn off the unit before unplugging.
14. Connect commercial-rated units to properly grounded outlets only.
15. Use with care when cleaning stairs.
16. Do not allow to be used as a toy. Close attention is necessary when used by or near children.

ADDITIONAL WARNINGS FOR USE OF POWER NOZZLES

1. Always turn off the vacuum before connecting or disconnecting either the hose or motorized nozzle.
2. The hose for the power nozzle contains electrical wires. Do not use if damaged, cut, or punctured. Avoid picking up sharp objects.
3. Read the safety instructions included with the power nozzles.

SAVE THESE INSTRUCTIONS

Violation of any of these instructions may void any and all warranties.

OPERATION

PREPARING THE VACUUM FOR OPERATION

1. Unlatch and remove the top cap and pull out the cloth filter. Check to see that the dome filter has not shifted during shipping (Figure A).
2. Reinstall the cloth filter, making sure that the lip of the filter completely covers the rim of the vacuum (Figure B).
3. Install a Micro filter (if there is not one already installed) by sliding the gasket of the Micro filter over the inlet on the inside of the top cap (Figure C). Replace the cap, making sure that the latches catch correctly.
At the beginning of each shift, the filters should be checked. Empty or replace as necessary.

NOTE: Never use a Micro filter without the cloth filter.

4. Push the hose into the cap opening .
5. Twist the aluminum wand into the hose (Figure D). Check hose cuffs at both ends to make sure that they are tight.
6. Loosen the shoulder straps and waist belt. In an open area, lift the vacuum by one shoulder strap and slide your free arm into the other strap (Figure E).
7. Fasten the waist belt snugly and make sure the weight is resting comfortably on your hips (Figure F).
8. Check the wear on the cord by the vacuum body and at the plug. Place the extension cord between the waist belt's strap and padded area to signal you if you have run out of cord while vacuuming (Figure G).
9. To attach tools to a 1½" aluminum wand, LOOSEN the plastic nut at the end of the wand, insert the tool, and retighten the nut. To ensure the copper ring stays in place, NEVER remove the nut.

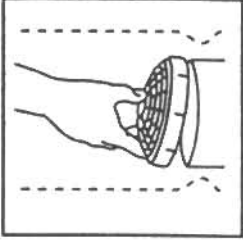


Figure A

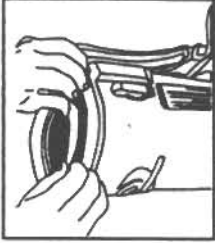


Figure B

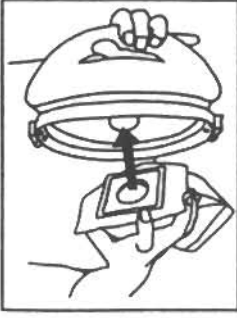


Figure C



Figure D



Figure E

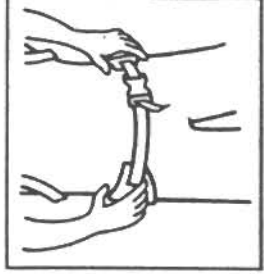


Figure F

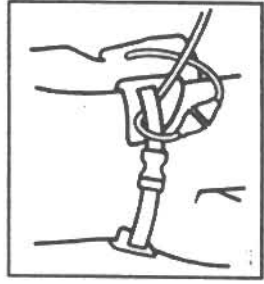


Figure G

PREPARING

FOR USE WITH POWER NOZZLES

1. A commercial-rated power nozzle with a three-pronged plug must be used with a commercial-rated vacuum.
2. Push the hose cuff of the electrified hose into the cap opening.
3. Feed the cord attached to the hose under the handle of the top cap and behind the vacuum for easier cord management. Then plug it into the receptacle on the base of the vacuum (Figure H).
4. The rotating brush roll could cause damage to bare floors. Be sure the brush roll is stationary for bare floors and rotating for carpet.
5. Read the additional instructions included with the power nozzles.

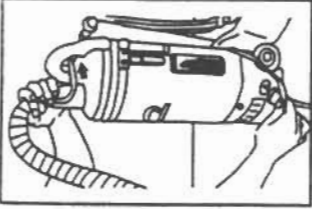


Figure H



Figure I



Figure J

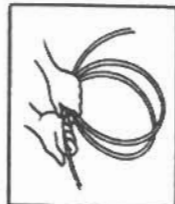


Figure K

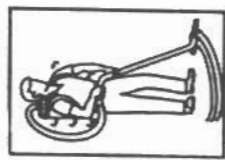


Figure L

PREPARING FOR USE AS A CANISTER

1. With a screwdriver, remove the two upper and lower mounting screws (Figure I).
2. Pull the backplate and spacers off and lay the vac down on the back swivel wheel (Figure J). Store the spacers, screws and backplate together where they will not be lost.
3. To put in backpack mode again, reverse the steps.

ELECTRICAL CORD CARE

NEVER stretch the cord tightly between the vacuum and the outlet. A cord that is stretched or pulled will not function properly and creates a danger.

After vacuuming, unplug the cord (at both ends of an extension cord) and wind it up loosely (Figure K). DO NOT wind the cord up by wrapping it around your hand and elbow.

PROPER STORAGE

When the vacuum is not in use, it should be stored in a dry place.

PROPER VACUUMING MOTION FOR LARGE AREAS WITH DIRECT SUCTION TOOLS

1. Begin with the wand parallel to your body.
2. Draw the top of the wand in toward your waist and twist at the waist, walking backward or forward (a side-to-side motion) (Figure L).
3. The motion is similar to mopping and keeps the upper body and arms from tiring.

ERGONOMICS

- ◆ The weight of the vacuum should be carried on the operator's hips and be evenly distributed.
- ◆ The padded waist belt and shoulder straps are adjustable for a custom fit.
- ◆ The backpack vacuums have a ventilated backplate to keep the operator cool.
- ◆ Use the proper attachments for the job. **Crusader** has attachments to perform most jobs without requiring that the operator bend over or get into difficult positions.

CARING FOR YOUR VACUUM

1. Every time you finish vacuuming, check the cloth and Micro filters.
2. After each shift, wipe the inside and outside of the vacuum with a household cleaning agent.

PREVENTIVE MAINTENANCE

WARNING: The following information is for use by qualified service personnel only and is to provide guidance for troubleshooting and maintenance.

- ◆ UNPLUG the vacuum when working on the motor or any electrical part.
- ◆ CHECK the condition of all electrical cords before each use.
- ◆ CHECK the carbon brushes on the motor every six months and replace any brush worn down to ½" in length.
- ◆ DO NOT lubricate the motor; it is equipped with sealed bearings.

TROUBLESHOOTING

1. If the vacuum will not operate, check:
 - a. The power supply cord at the wall outlet.
 - b. The power supply cord at the vacuum.
 - c. That the switch is in the "on" position and functioning properly.
2. If the pigtail (18" power cord) on a commercial-rated vacuum is getting warm, check to see that the extension cord does not exceed a length of 50 feet at 16 gauge or 100 feet at 14 gauge. Longer cords will overheat and damage the vacuum.
3. If the exhaust that comes out of the back of the vacuum is warmer than usual, check and/or clean all filters.
4. If the power switch fails, check the circuit breaker. If that is not the problem, see an authorized servicing dealer.
5. If loss of suction occurs:
 - a. Check that debris is not plugging the hose, wand, and/or floor tool.
 - b. Check and/or clean both micro and cloth filters.
 - c. Check that the hose cuffs are fitting tightly on the hose and are not cracked.
 - d. Check that the cap is properly attached to the vacuum body.

MAINTENANCE OF POWER NOZZLES

- ◆ DO NOT OIL. The motor in your power nozzle is permanently lubricated and sealed. Do not oil the motor at any time.
- ◆ For maintenance of the power nozzles, including instructions for the brush roll, belt, and brush strips, consult the instructions packaged with the power nozzle. Maintenance instructions for power nozzles are for use by qualified service personnel only.

FILTER MAINTENANCE

1. Check the Micro filter EACH and EVERY time you start and finish vacuuming. A clogged and dirty filter restricts airflow and results in reduced suction and overheating.
2. While vacuuming stop every two hours or as needed to check the Micro filter. Replace with a new Micro filter when necessary.

To install a Micro filter, slide the gasket of the Micro filter over the inlet on the inside of the top cap (Figure M), then replace the cap, making sure that the latches catch correctly.

NOTE: Lift both Micro filter and cloth filter out at the same time to avoid ripping the Micro filter, especially if it is full.

3. Once a month (or more often if necessary) hand or machine wash the cloth filter and let it **LINE DRY**. (Do not put it in the dryer).

When reinstalling the cloth filter, be sure the lip of the filter completely covers the rim of the vacuum (Figure N).

4. Once a month (or more often if necessary) clean the dome filter, located inside the vacuum underneath the Micro filter and cloth filter.

- a. Pull the top piece of the dome filter off and remove the foam media (Figure O). Shake it out, rinse it and let it air dry thoroughly.
- b. Before the next use, return the foam media to its place. Replace with new foam media if necessary.
- c. Firmly snap the top piece of the dome filter into place.

NOTE: If using a high filtration disc in place of the foam media, check it every 2-3 weeks. When the disc becomes discolored, replace it with a new disc. The life of the high filtration disc will depend greatly on the use and care of the Micro filter and cloth filter.

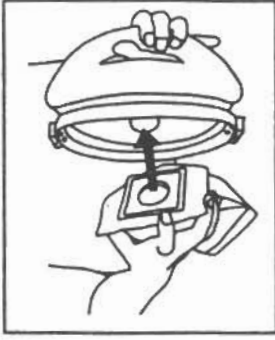


Figure M

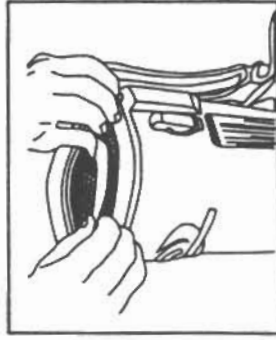
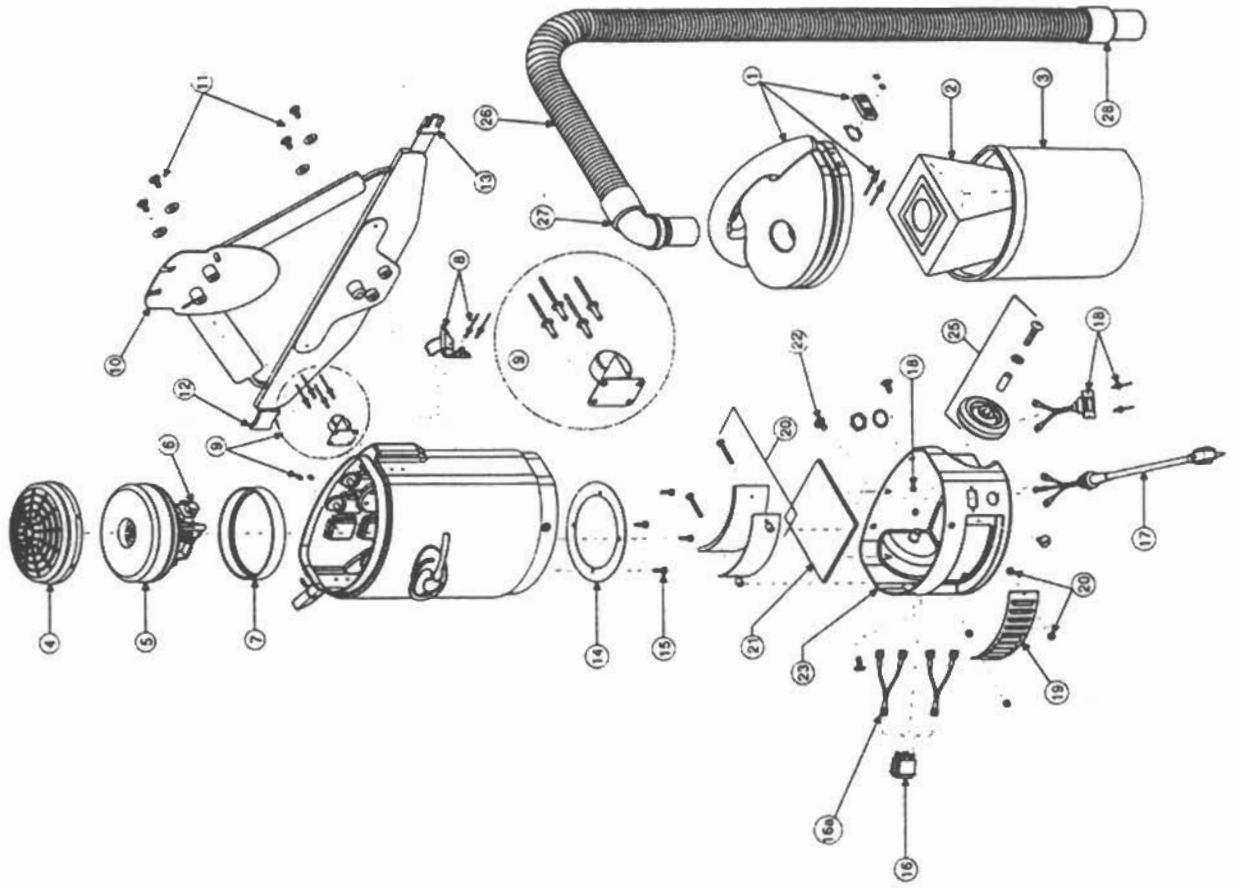


Figure N



Figure O

Walkabout Assembly



3030A Walkabout

Part #	Qty.	Description
1	1 set	Lid Assembly: 1 Lid, 2 Latch Strikes, 2 Bumpers, 4 Pop Rivets, 4 Washers
2	10/pack	454 sq. in. Intercept Micro Filter
3	1 each	Micro Cloth Filter
4	1 set	Dome Filter w/Foam Media
	1 each	Foam Media for Dome Filter
	2/pack	High Filtration Disc (Optional)
5	1 each	928 Watt Motor/Fan w/Crimps
6	1 set	Replacement Carbon Brush Set for 928W Motor
7	1 each	Motor Seal
8	1 set	Draw Latch Assembly: 1 Latch, 2 Rivets, 2 Washers
9	1 set	Swivel Caster Assembly: 1 Caster, 4 Rivets, 4 Washers
10	1 set	Two-piece Backplate System Complete
	1 set	Shoulder Strap Assembly: 2 Shoulder Straps w/Sternum Strap, 2 Buckles
	1 each	Shoulder Strap Plastic Adjustment Buckle (Top)
	1 each	Shoulder Strap Plastic Adjustment Buckle (Bottom)
	1 each	Waist Belt
	1 set	Barrel Nut Connection Set (Replacement)
11	1 set	Backplate Connection Set: 4 Screws (2 Long/2 Short), 4 Washers
12	1 each	Waist Belt Keeper
13	1 each	Waist Belt Latch
14	1 each	Motor Plate
15	1 set	Motor Plate Connection Screw Set: 4 Screws
16	1 each	Double Pole On/Off Switch
16a	1 each	Wire Splitter
17	1 set	Power Cord (18" 16/3) Assembly Complete w/Strain Relief w/Locknut and Washer
18	1 each	Powerhead Receptacle Assembly 1 Three-wire Receptacle, 2 Rivets, 2 Washers
19	1 each	Exhaust Louver
20	1 set	Sound/Exhaust Assembly: 2 Nylock Nuts, 2 Hex Nuts w/Washers, 2 Screws, 1 Small Felt Acoustic Insulator, 1 Exhaust Bracket, 2 Nylon Spacers
21	1 each	Acoustic Insulator, Felt, Large
22	1 set	Bottom Cap Screw Kit: 4 Screws
23	1 each	Bottom Cap (Black) w/Wheel Wells
25	1 set	Rear Wheel Assembly: 2 Wheels, 2 Axle Sleeves, 2 Axle Washers, 2 Axle Screws
26	1 each	Static Dissipating Hose w/Cuffs (Black)
27	1 each	Replacement Cuff w/Swivel Elbow (Black)
28	1 each	Replacement Swivel Cuff (Black)

LIMITED WARRANTY

Crusader warrants this vacuum cleaner to be free from defects in materials and workmanship for a term of ten years on plastic tanks and lids and one year on all other parts. AMETEK factory warranty applies to the motor. This warranty is good for one year from the date of purchase only when the vacuum cleaner is used in accordance with Crusader's operating instructions. This warranty does not apply:

- (i) to normal wear parts that require replacement under normal use including, but not limited to: hoses, filters, attachments and belts and brushes on the power nozzles;
- (ii) to ordinary wear and tear and blockages which occur during use; and
- (iii) to vacuum cleaners which break down because of unauthorized or improper use, modification, alteration, service, or repair.

This warranty is extended only to the original purchaser of the vacuum cleaner in the United States and may be enforced only by such person or company. If the vacuum cleaner is found to be defective during the warranty period, it will be Crusader's option to replace or repair it, without charge, if returned in accordance with the following instructions:

The vacuum cleaner should be cleaned and packed carefully in a well padded and insulated carton and returned, shipping charges prepaid, or taken to any authorized Crusader Servicing Dealer

If a completed warranty card has not been returned to Crusader, a dated, written, proof-of-purchase must be enclosed with a statement advising the nature of the malfunction and a return authorization number. This authorization number may be obtained by calling Crusader's customer service department. Care must be exercised in the proper packing of the vacuum cleaner when returned under this warranty, as Crusader will not be responsible for warranty repairs to products damaged during transit because of improper packing.

Any repair or replacement under this warranty shall not extend the warranty period. The above warranty is exclusive and in lieu of all other expressed warranties whether oral or written. Any implied warranties which may arise by operation of law, including the implied warranties of merchantability and fitness for a particular purpose, are limited in duration to the one year duration from the date of purchase of the written warranty set forth herein.

Under no circumstances, whether alleged as a result of breach of contract or warranty, negligence or otherwise, shall Crusader be liable to the purchaser or gift recipient or any other person for special incidental or consequential damages or nature, including, without limitation, damages to or loss of use of property. Crusader's liability under any circumstances will not exceed the purchase price of the vacuum cleaner. No agent, employee, or representative of Crusader, nor any other person, is authorized to modify this warranty in any respect.

For warranty information on the power nozzles, refer to the separate owner's manual packaged with the power nozzles.



Quick Reference Walkabout Parts List

2102B 7' Cord For Power Nozzle
2221 50' Extension Cord
2223 Thermo Protector
2225 Harness (Back) Plate #113
2226 Exhaust Cover
2227 Foam Diffuser
2229 Hose, Cord, & Bent Wand Assy.
2230 Harness Only #171
2231 Motor #210-052
2232 Motor Gasket #220
2233 Old Style Strain Relief
2234 Cord Holder
2235 8" Pigtail For Electrified Hose
2236 28" Pigtail For Electrified Hose
2248 Latch Assy.
2249 Motor Plate
2250 Set of screws for backplate
2550 Switch
4002A Hand Tool
4008A Round Tool
4060 10 Pack Bags
4061 Absolute (HEPA) Filter
4062 MicroTek Cloth Bag
4063 Floor & Rug Tool
4064 Swivel Hose Cuff – Twistlock – Machine End
4064A Swivel Hose Cuff – Smooth – Newest Style – Machine End
4065 Motor Pre Filter
4066 Wheel Kit
4067 18" Plastic Wand Section (1each-takes 2 to make a full wand)
4068 Crevice Tool
4069 1 1/4" x 5' Hose w/ Curved Wand
4069A 1 1/4" X 5' Hose Only – New Style Smooth Friction Fit
4070 Carry Bag
4071 1 1/4" Swivel Hose Cuff – Wand End
4072 1 1/4" Curved Wand Only
4074 1 1/4" Hose Cuff – Straight – Use With Wheel Kit